

# Instruction Sheet

**Subject: 8263400 H50/55-OCF Heat Cut Off Kit Instructions**

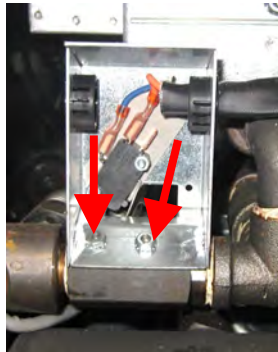
**Models affected: H50/55-OCF Gas Fryers**

Follow these instructions to install a heat cut off switch on H50/55-OCF fryers.

1. Disconnect power from the fryer.
2. Disconnect gas from the fryer.
3. Remove fryer from the hood and relocate it to gain access to the rear of the fryer.
4. Remove the lower back panel (see Figure 1).
5. Remove the 2 nuts that attach the filter switch box to the return valve (see Figures 2 & 3).
6. Remove the clevis clip off of the return handle rod (see Figure 4).
7. Remove the rod from the return valve handle (see Figure 5).
8. Using a screw driver straighten the locking nut tab on the return valve (see Figure 6).
9. Using a 9/16" socket remove the nut off of the return valve shaft (see Figure 7).
10. Remove the locking tab and handle off of the return valve (see Figure 8).



**Figure 1**



**Figure 2**

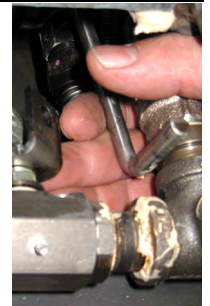
In This Kit		
Part #	Description	Qty
8074101	MICROSWITCH – LONG ARM	1
8090601	LEFT CLEVIS CLIP	1
8090657	RIGHT CLEVIS CLIP	1
8239325	LEFT VALVE HANDLE W/ TAB	1
8239326	RIGHT VALVE HANDLE W/ TAB	1
8160220	SWITCH INSULATION	1
2401576	REAR SWITCH COVER	1
1087435	SWITCH WIRE ASSEMBLY	1
8090412	#10 CABINET SCREWS	5
8140015	BLACK TIE STRAPS	3
9002935	VALVE HANDLE RETAINER	2
8091229	#4-40 X 1½" SLOTTED SCREW	3
8090237	#4-40 KEPS NUT	5
8197422	INSTRUCTIONS	1



**Figure 3**



**Figure 4**



**Figure 5**



**Figure 6**



**Figure 7**



**Figure 8**



**Figure 9**

11. Compare all three handles as shown and discard the handle that doesn't match the other two (see Figure 9). Discard the old handle (see Figure 10).

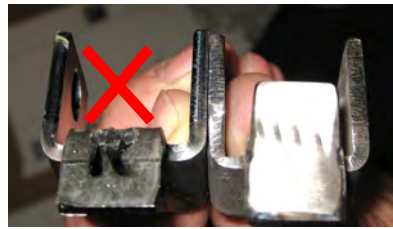


Figure 10

12. Attach the new bracket to the valve (see Figure 11).



Figure 11

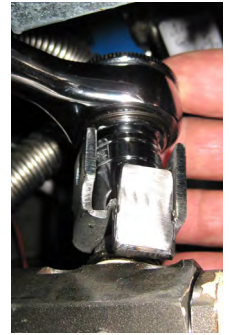


Figure 12

13. Attach the locking bracket tab removed in step 10 and tighten the nut (see Figure 12)

14. Bend locking tab over the nut away from the valve using a screwdriver or small pair of pliers (see Figure 13).



Figure 13

15. Slip clevis clip over the bracket and insert the rod into the return valve handle (see Figure 14).



Figure 14

16. Secure the clevis clip over the rod.



Figure 15

17. Rotate the filter handle to ensure it moves freely.



Figure 16

18. Loosen and remove the nuts and screws from the switch located in the return valve switch box one at a time and replace with longer screws in the opposite direction (see Figures 15 & 16).



Figure 17

19. On the opposite side of the switch box, place the switch insulation over the screws



Figure 18

inserted in the step 19 (see Figure 17).

20. Slide the new switch in the same orientation as the other switch over the screws (see Figure 18).



Figure 19

21. Attach nuts and tighten (see Figure 19).



Figure 20

22. Using the enclosed harness, attach wires to the new switch as shown (see Figure 20).



Figure 21

23. Attach supplied cover using supplied nuts (see Figure 21).



Figure 22

24. Using supplied tie wraps secure harness to cover (see Figure 22).



Figure 23

25. Reattach filter switch box to the return valve (see Figure 23).



Figure 24

26. Route new harness up to the associated gas valve (see Figure 24).



Figure 25

27. Carefully remove power wire from gas valve (see Figure 25).



Figure 26

28. Insert male power wire removed from gas valve into black female terminal in new harness (see Figure 26).
29. Attach red wire from new harness to power terminal on gas valve where black wire was removed (see Figure 27).
30. Tuck harness out of way (see Figure 28).
31. Repeat steps 5 through step 30 for each vat.
32. Reattach the gas line.
33. Reconnect the power cord to power source.
34. Turn the controllers to the ON position.
35. During melt cycle on a 3000 controller press the EXIT COOL button and then press YES to exit the melt cycle. During melt cycle on a CM3.5 controller press the "R" button on a full vat or on a split pot press the "R" button for right side and the "L" button for the left side to exit the melt cycle.
36. Wait for the burner to light on the vat being tested.
37. While the heat LED is on and burner is lit, turn on the filter pump by turning the filter handle associated with that vat (see Figure 29).
38. The gas valve will close and within 8 seconds the 3000 controller should display HEATING FAILURE or the CM3.5 controller should display HELP if the switch was properly installed.
39. Turn off the filter pump.
40. Turn off the controller.
41. After approximately 10 seconds turn back on the controller and normal operation should occur.
42. Repeat steps 35 through 42 for each vat.
43. Reattach back panels to complete the kit install.



Figure 27



Figure 28

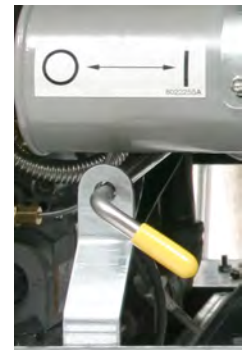


Figure 29